

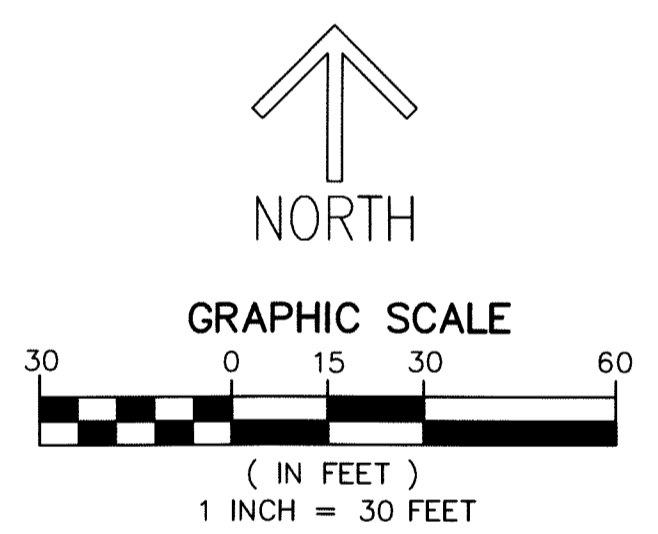
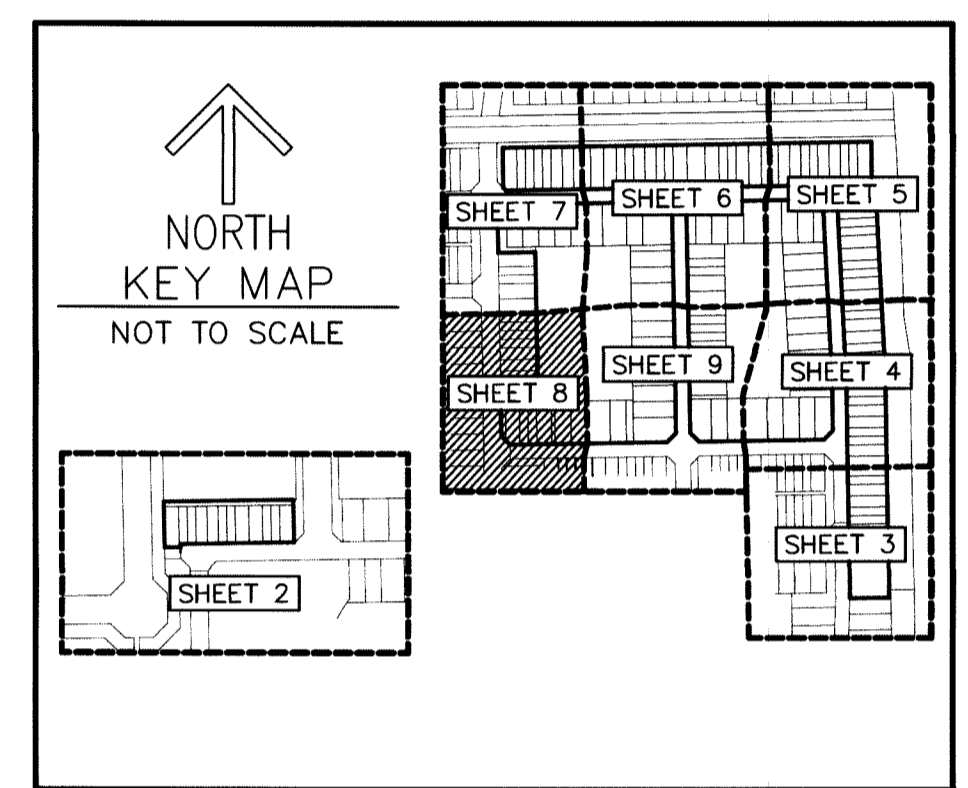
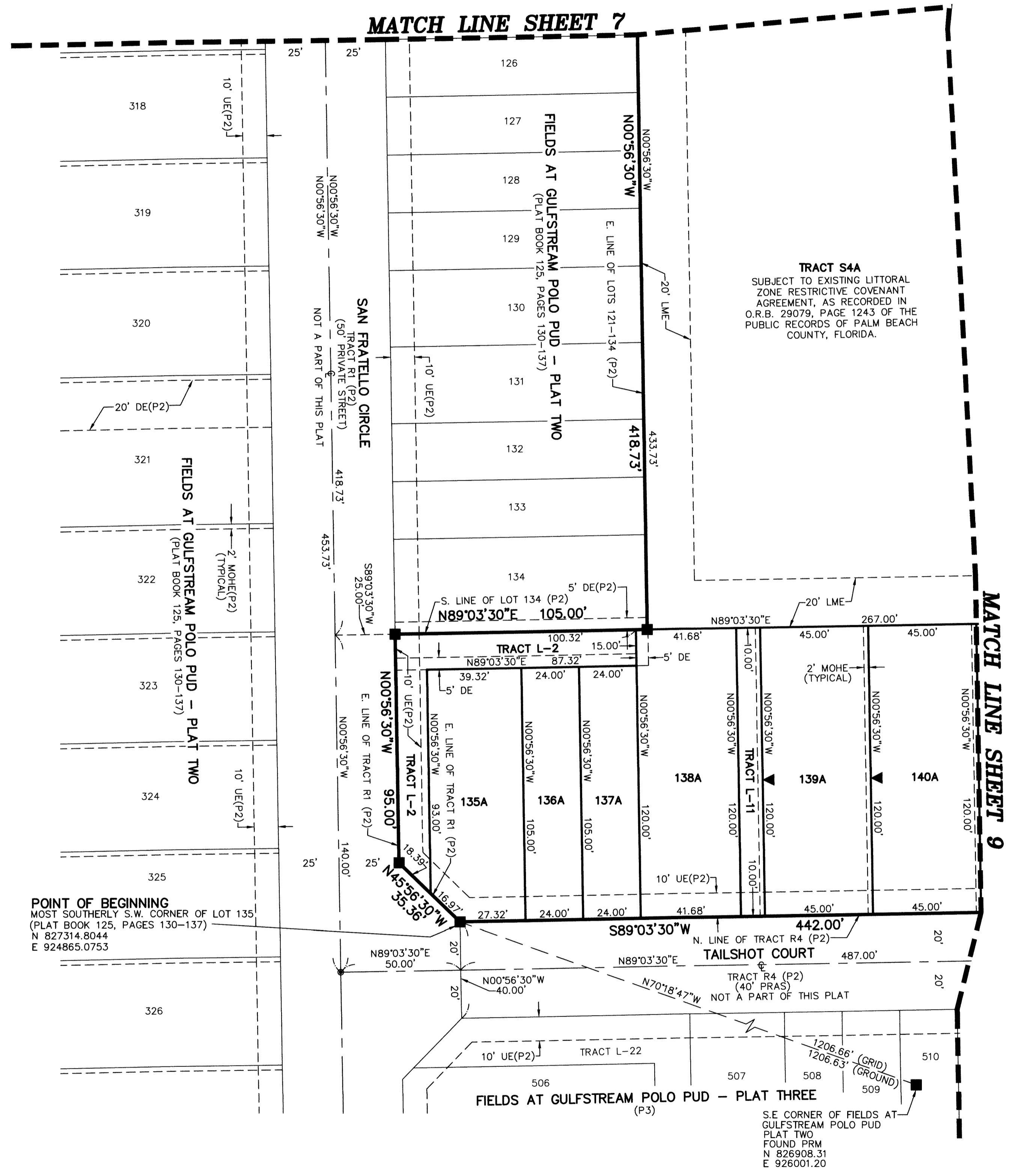
# FIELDS AT GULFSTREAM POLO PUD - PLAT FOUR

THIS INSTRUMENT PREPARED BY  
DAVID P. LINDLEY  
OF  
**CAULFIELD and WHEELER, INC.**  
SURVEYORS - ENGINEERS - PLANNERS  
7900 GLADES ROAD, SUITE 100  
BOCA RATON, FLORIDA 33434 - (561)392-1991  
CERTIFICATE OF AUTHORIZATION NO. LB3591

A PLANNED UNIT DEVELOPMENT  
BEING A REPLAT OF LOTS 77 THROUGH 120, LOTS 135 THROUGH 220, LOTS 299 THROUGH 308, TRACTS L-6 THROUGH L-12, TRACTS S4, S5 AND REC,  
FIELDS AT GULFSTREAM POLO PUD - PLAT TWO, AS RECORDED IN PLAT BOOK 125, PAGES 130 THROUGH 137,  
TOGETHER WITH  
TRACT S10, FIELDS AT GULFSTREAM POLO PUD - PLAT THREE, AS RECORDED IN PLAT BOOK 127, PAGES 162 THROUGH 176,  
ALL OF THE PUBLIC RECORDS OF PALM BEACH COUNTY, FLORIDA.  
LYING IN SECTION 29, TOWNSHIP 44 SOUTH, RANGE 42 EAST, PALM BEACH COUNTY, FLORIDA

161

SHEET 8 OF 9



**NOTES**  
**COORDINATES, BEARINGS AND DISTANCES**  
COORDINATES SHOWN ARE GRID  
DATUM = NAD 83 (90 ADJUSTMENT)  
ZONE = FLORIDA EAST  
LINEAR UNIT = US SURVEY FEET  
COORDINATE SYSTEM 1983 STATE PLANE  
TRANSVERSE MERCATOR PROJECTION  
ALL DISTANCES ARE GROUND, UNLESS OTHERWISE NOTED  
SCALE FACTOR = 1.0000236  
GROUND DISTANCE X SCALE FACTOR = GRID DISTANCE  
BEARINGS AS SHOWN HEREON ARE GRID DATUM,  
NAD 83 (90 ADJUSTMENT), FLORIDA EAST ZONE.

**LEGEND/ABBREVIATIONS**  
 e - CENTERLINE  
 Δ - DELTA (CENTRAL ANGLE)  
 CB - CHORD BEARING  
 CD - CHORD DISTANCE  
 DE - DRAINAGE EASEMENT  
 E - EASTING (WHEN USED WITH COORDINATES)  
 L - ARC LENGTH  
 LAE - LIMITED ACCESS EASEMENT  
 LB - LICENSED BUSINESS  
 LMAE - LAKE MAINTENANCE ACCESS EASEMENT  
 LME - LAKE MAINTENANCE EASEMENT  
 L.W.D.D. - LAKE WORTH DRAINAGE DISTRICT  
 N - NORTHING (WHEN USED WITH COORDINATES)  
 MOHE - MAINTENANCE AND OVERHANG EASEMENT  
 O.R.B. - OFFICIAL RECORD BOOK  
 PC - POINT OF CURVATURE  
 PRAS - PRIVATE RESIDENTIAL ACCESS STREET  
 PNT - POINT OF NON TANGENCY  
 PT - POINT OF TANGENCY  
 PBCUE - PALM BEACH COUNTY UTILITY EASEMENT  
 (P1) - FIELDS AT GULFSTREAM POLO PUD - PLAT ONE  
 (PLAT BOOK 123, PAGES 80-95)  
 (P2) - FIELDS AT GULFSTREAM POLO PUD - PLAT TWO  
 (PLAT BOOK 125, PAGES 130-137)  
 (P3) - FIELDS AT GULFSTREAM POLO PUD - PLAT THREE  
 (PLAT BOOK 127, PAGES 162-176)  
 R - RADIUS  
 UE - UTILITY EASEMENT  
 SWE - SIDEWALK EASEMENT  
 ► - INDICATES "ZERO" SIDE OF LOT LINE  
 ■ PRM - DENOTES SET PERMANENT REFERENCE MONUMENT  
 4" x 4" x 24" CONCRETE MONUMENT WITH  
 ALUMINUM DISK STAMPED "C&W PRM LB3591"  
 ● PCP - DENOTES PERMANENT CONTROL POINT

POINT OF BEGINNING  
MOST SOUTHERLY S.W. CORNER OF LOT 135  
(PLAT BOOK 125, PAGES 130-137)  
N 827314.8044  
E 924865.0753

S.E. CORNER OF FIELDS AT  
GULFSTREAM POLO PUD  
PLAT TWO  
FOUND PRM  
N 826908.31  
E 926001.20